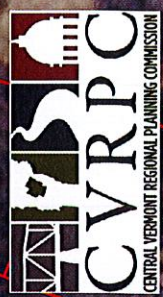
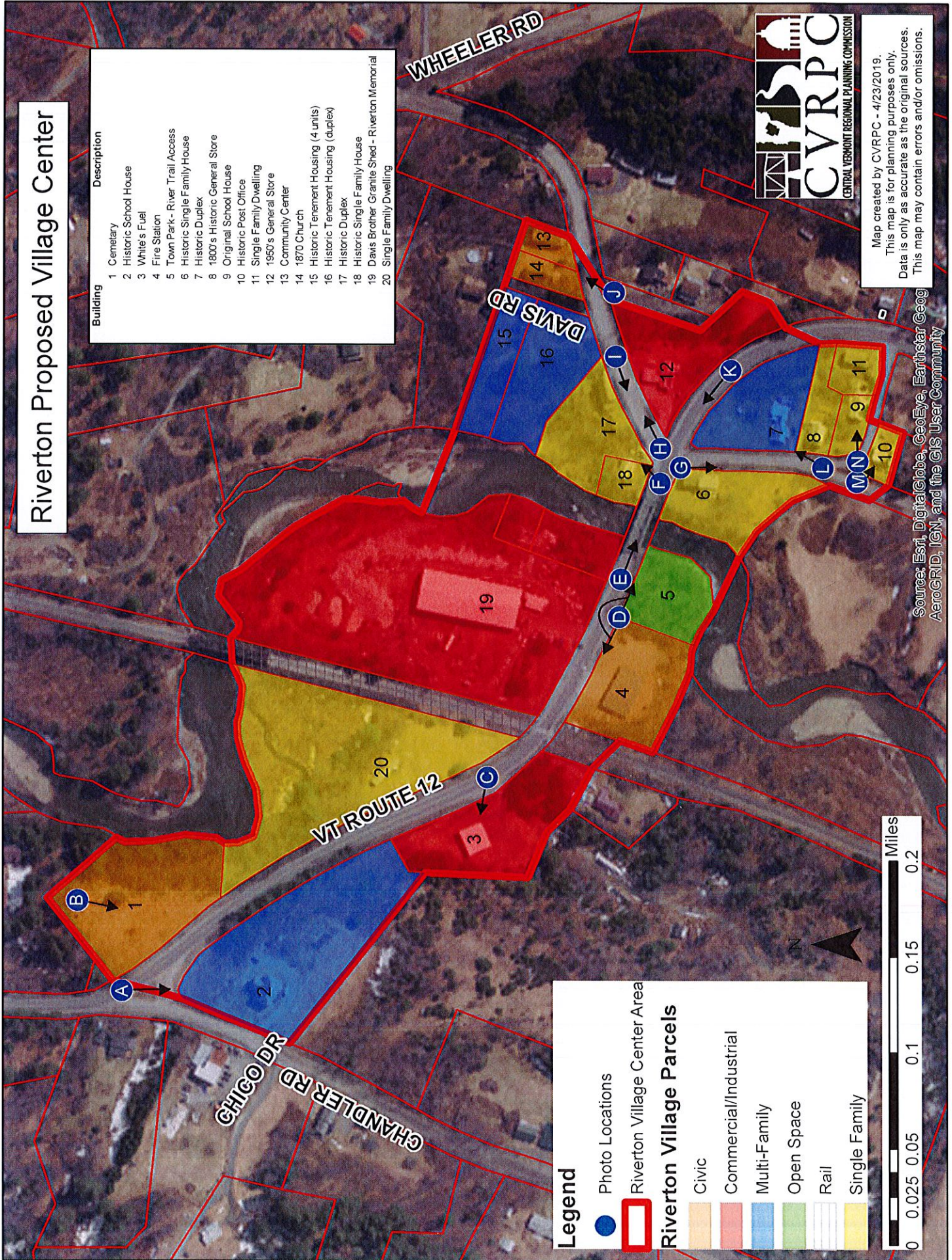


Riverton Proposed Village Center

Building	Description
1	Cemetery
2	Historic School House
3	White's Fuel
4	Fire Station
5	Town Park - River Trail Access
6	Historic Single Family House
7	Historic Duplex
8	1800's Historic General Store
9	Original School House
10	Historic Post Office
11	Single Family Dwelling
12	1950's General Store
13	Community Center
14	1870 Church
15	Historic Tenement Housing (4 units)
16	Historic Tenement Housing (duplex)
17	Historic Duplex
18	Historic Single Family House
19	Daws Brother Granite Shed - Riverton Memorial
20	Single Family Dwelling



Map created by CVRPC - 4/23/2019.
 This map is for planning purposes only.
 Data is only as accurate as the original sources.
 This map may contain errors and/or omissions.



Legend

- Photo Locations
 - Riverton Village Center Area
- ### Riverton Village Parcels
- Civic
 - Commercial/Industrial
 - Multi-Family
 - Open Space
 - Rail
 - Single Family



Source: Esri, DigitalGlobe, GeoEye, Earthstar Geog, AeroGRID, IGN, and the GIS User Community

Berlin Village Designation: Riverton

Attached Photos & Descriptions

Photos correspond to letters on the attached map. Please use this document to identify relevant views within the village boundary. In numerous cases, historic photos of buildings or views have been included and will be displayed under current photos.



A. View of Historic 4-room schoolhouse (Building 2), now a multi-family home, from Route 12 looking south.

Below: Photo of the historic 4-room schoolhouse.





B. View of the historic 4-room schoolhouse (Building 2) from the cemetery at the northern boundary of the village, looking south.



C. View of White's Fuel (Building 3) from Route 12 looking West.



D. Panoramic Photo of the Fire Station (Building 4), Riverton Memorial, (Building 19), and the Berlin-owned parcel (Building 5) and bridge. View spans from west, to north, to east (from left to right).

See attached file for the full-sized image.



E. View of the bridge and the currently unused General Store (Building 12) from Route 12 looking east.



F. View of a historic single family home (Building 19) from Route 12 looking north. Riverton Memorial (Building 19) may be seen across the river in the left side of the photo.



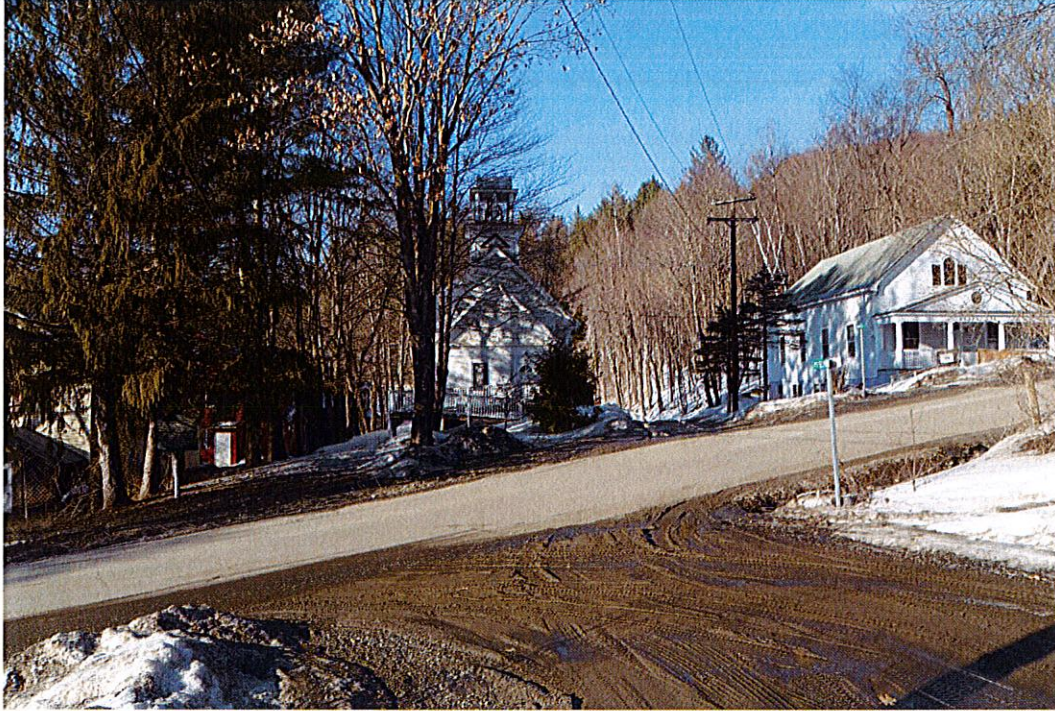
G. View of the historic single family house (now renovated – Building 6), Historic Duplex (Building 7), and original 1800's General Store (now single family home – Building 8) down Ayer's Road from the intersection with Route 12. View is looking south.



H. View of the 1950's General Store (Building 12), historic duplex (now single family – Building 17), and the community center (Building 13) from the intersection of Crosstown Road and Route 12 looking northeast. The 1870's Church (Building 14) is hidden by trees in this photo, but sits just west of Building 13.



I. View of Ayer's Road (with buildings 6 (historic single family), 7 (historic duplex), 8 (1800's general store) in the background) from Crosstown Road, where the 1950's General Store (Building 12) sits in the foreground. View is looking south, and Route 12 bisects this intersection.



J. View of the 1870's Church (Building 14) and Community Center (Building 13) from across Crosstown Road looking north. Shaded by the trees, the duplexes (Buildings 15 and 16) may be seen to the left of the church.

Below: Photo of the historic Methodist church



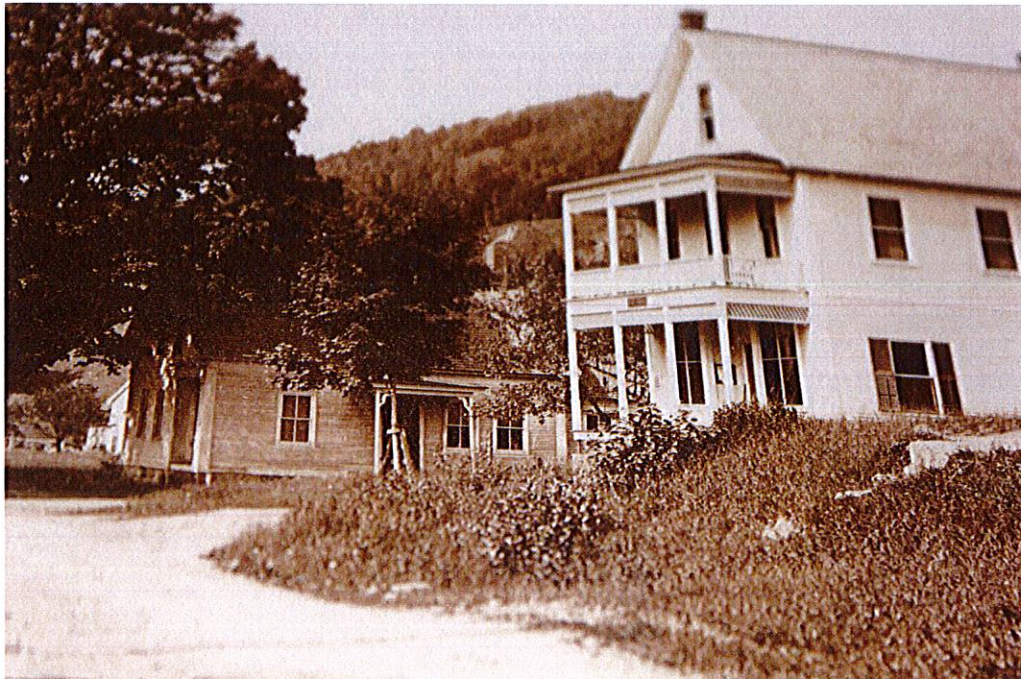


K. View from google maps of Route 12 heading west. The historic single family house (Building 6) may be seen on the south side of Route 12, while the north side shows the historic single family house (Building 18)



L. View of the 1800's General Store (now single family house – Building 8) and the historic duplex (Building 7) looking Northeast on Ayer's Road.

Below: Historic photo of the two buildings





M. View of the Historic Post Office (Building 10) at the corner of Ayer's Road and School St looking South.



N. View of the current single family house (Building 9) on School St. with another single family house (Building 11) seen behind it to the east.

Below: Historic photo of the single family house (Building 9) when it was the one-room schoolhouse.

